



RockFLEET GSM can report your position and provide communication options from anywhere on Earth with a view of the sky.



- Autonomous GPS tracking
- Various mounting options for covert or non-covert installation
- Transmission via both GSM and Iridium Satellite
- Full 2-way communication system from anywhere on Earth
- Integrated Power Conditioning (9-30v)
- Internal Battery Backup, allows for up to 2 weeks of unpowered operation
- Truly Global Operation, using the Iridium satellite network outside cellular coverage
- Over-the-air reconfiguration of key parameters such as tracking frequency
- Optional serial integration add-on to provide sat-comms to other devices

Pricing Information

RockFLEET GSM Device Costs

\$1,495.00

Usage Costs

Item	Price
Activation fee	\$99.00
Device connection fee (per month)	\$20.00
Unlimited cellular IP Tracking (per month)	\$25.00
Satellite message (per 30 bytes)	\$0.08
Cellular message	Included*
*reasonable use conditions apply	

Typical fees shown, other fees may apply.

All prices are in US dollars and excludes sales and service taxes.

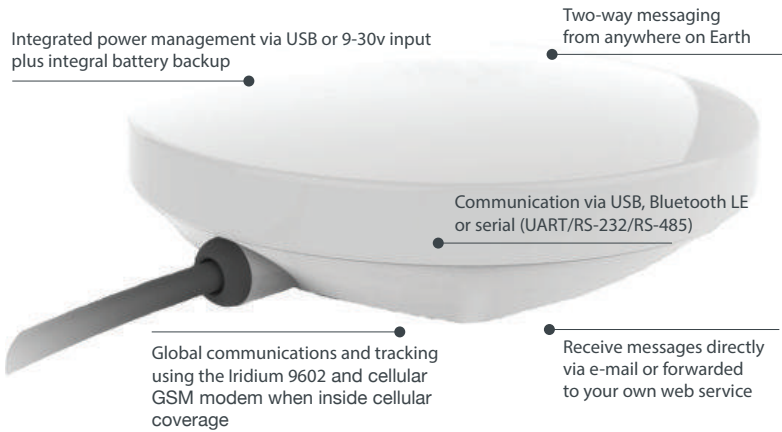
Provision of services is subject to TracPlus terms and conditions.

Services are charged in arrears, credit applications may be required at TracPlus discretion.

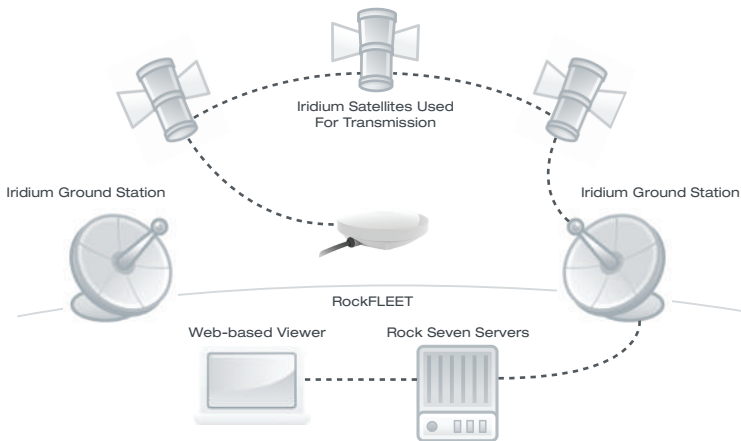
Key Functionality

Coupled with our intuitive desktop, web and mobile mapping:

- » Position tracking – the unit will automatically report your position at a preset time interval (e.g. every 5 minutes).
- » Alerting – connect an alert button to the device and a message will be sent to your In Case of Emergency contacts with your precise location.
- » Advanced Alerting – temperature, impact, loss of power alarms and other types of alert are available.
- » Encryption – all data to and from the RockFLEET can be encrypted up to AES-256 standards.
- » Manage your assets – view and manage all of your tracking devices, including your RockFLEETs, at your desk or on your iOS device.
- » Share with others – quickly and easily share tracking data with others – even if they don't use TracPlus.
- » No annual contracts – simply pay for what you use.
- » Cost effective – uses cellular networks when inside cellular coverage, satellite network when not.



How does the RockFLEET work?



The RockFLEET allows you to track the position of your assets, and send and receive short messages from anywhere on Earth with a clear view of the sky. It can transmit using either GPRS or Iridium satellite, and works far beyond the reach of standard WiFi and GSM networks.

Maybe you want to track your assets wherever they go? transmit weather information from mid-ocean? Or use it to control your robot in the middle of the desert? Perhaps you need to communicate in an emergency, when other networks might not be available? RockFLEET can help you.

At the heart of RockFLEET is an Iridium 9602 modem. The RockFLEET hosts the 9602 and provides it with an antenna, and its power supply requirements. Various options are provided for allowing you to communicate with your own systems, via RS-232, Bluetooth LE and more.

Iridium is the only satellite network that allows transmission of information from any point on Earth – other networks have no coverage in the polar regions, and have intermittent or no coverage in other marine and land areas.

Iridium has 66 satellites in orbit around the Earth, allowing coverage anywhere on Earth 24 hours a day, 7 days a week. No other satellite network has truly global coverage. Messages sent via Iridium take just seconds to reach you, via e-mail or directly to your web-service.

Physical Properties

RockFLEET Unit	120mm diameter x 50mm high
Mounting Options	various (please ask)
Cable Options	3m 9-30v (can be varied)

Environmental Properties

Storage Temperature	-40 to 85 deg C
Operating Temperature	-30 to 60 deg C
Operating Environment	< 75% Relative Humidity
Testing	Rugged Unit - Sealed against dust and water ingress to IP68

Power

Input voltage	DC (9-30v)
Power Consumption	500mA max, plus very low current sleep mode (< 30mA)

Communication

Iridium Modem	9602 short burst transceiver
Iridium Antenna	Maxtena 1621 patch antenna

Product Options

Serial communications, Bluetooth LE
9-30v power input, various mounting bracket options

Available From:



For more information, technical product details and PDF downloads please visit our website.

Disclaimers:

The Iridium logo and word, Arduino word, and Raspberry Pi word are registered trademarks or their respective owners.